

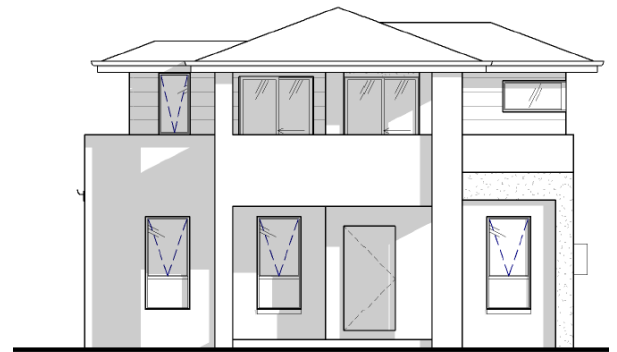
LAND
344sqm
HOUSE
29.51sq

\$932,900*

HUMMINGBIRD S9
Fixed Price



©Copyright



House component includes the following:

- Includes , 4 bedrooms, Sitting room, Patio, Living, Study, Theatre, Dining, Alfresco, Balcony & double lock up garage
- Includes site costs, recycled water, smart wiring, ducted vacuum, alarm & intercom.
- Carpet to Study, Theatre, Bedrooms & stairs in standard 'A' range & Floor tiles to Entry, Living, Kitchen, Dining, Patio ,Alfresco & Balcony.
- Flyscreen to windows and Vertical blinds in Standard range to all windows (excluding wet areas) and where cooktop backs onto window.
- Gloss vacuum kitchen cupboards & Smart stone benchtop.
- 2550mm high ceiling to ground floor.
- LED Downlights to main area.
- Panel doors to main area.
- 900 free standing oven with a 900 canopy in s/steel
- Panel lift garage door.
- Contour roof tiles with Whirly bird.
- Flick mixers to kitchen, shower, vanity & multi function shower arm.
- Driveway, landscape, turf & fences.
- 1490 freestanding Bath
- 26LT hot water system.
- Polished edge mirror & semi frameless shower screen.
- Shower niche, chrome floor waste & tile trim.
- Reverse cycle air conditioning.

©Copyright



* House and land sold as one components and is subject to land registration. Design subject to council, private certifier and developers requirements plans may vary to suit. All drawings & images are for illustrative purposes only. Façade/ Floor plan may shows upgraded items that are not a part of this house and land Package. Eagle Homes reserves the right to revise the plans and specifications without notice or obligation. E&OE H&L 20/9/17

Phone for more information : 9600 8100

www.eaglehomes.com.au