

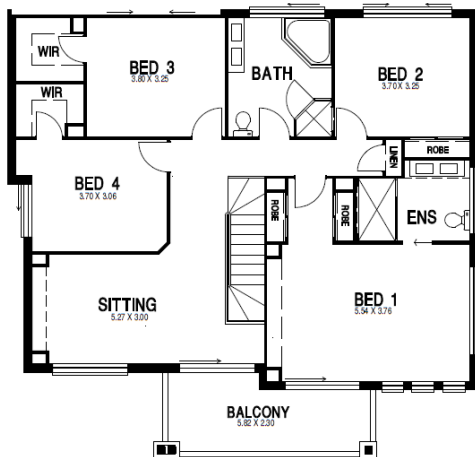
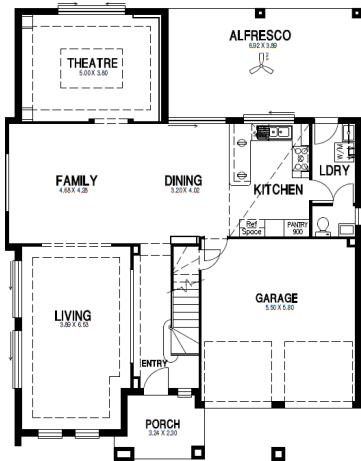


LAND  
500sqm  
HOME  
Approx.  
35sq

**\$1,022,000\***

**Albatross S4**  
**Elmswood Facade**

**House component includes the following:**



- Includes Elmswood façade, 4 bedrooms plus , Living, Dining, Family, Kitchen, Theatre, Alfresco, Sitting room & double lock up garage.
- Includes site costs, recycled water, smart wiring, ducted vacuum, alarm & intercom.
- Carpet to upstairs, Stairs, Living & Theatre in standard 'A' range & Floor tiles to Entry, Kitchen, Dining, Family, Alfresco & Porch.
- Flyscreen throughout and Vertical blinds in Standard range to all windows ( excluding wet areas) and where cooktop backs onto window.
- Gloss vacuum kitchen cupboards & Caesar stone benchtop.
- Downlights to main area.
- Panel doors to main area.
- 900 free standing oven with a 900 canopy in s/steel
- Panel lift garage door.
- Contour roof tiles with Whirly bird.
- Flick mixers to kitchen, shower, vanity & multi function shower arm.
- 2550 high ceiling to ground floor.
- Driveway, landscape, turf & fences.
- Double vanity bowl in polyurethane.
- 26LT hot water system.
- Cedar ceiling to alfresco area.
- Polished edge mirror & semi frameless shower screen.
- Shower niche, chrome floor waste & tile trim.
- Reverse cycle air conditioning.

\* House and land sold as separate components and is subject to land registration. Pricing is subject to council and statutory requirements not previously allowed for. All drawings & images are for illustrative purposes only. Eagle Homes reserves the right to revise the plans and specifications without notice or obligation. E&OE. 18/5/2018

**Phone for more information : 9600 8100**

**[www.eaglehomes.com.au](http://www.eaglehomes.com.au)**